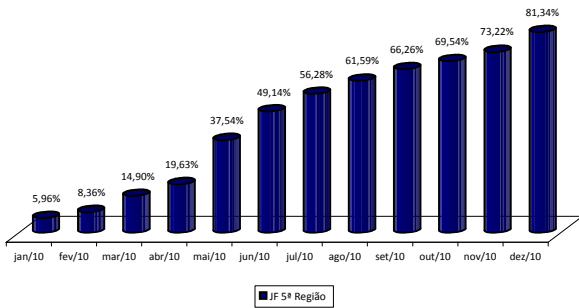
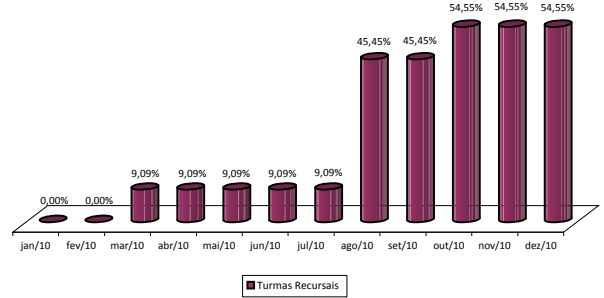
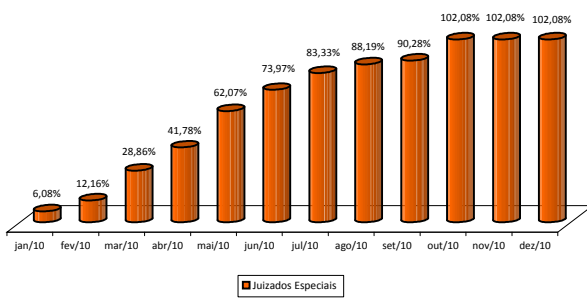
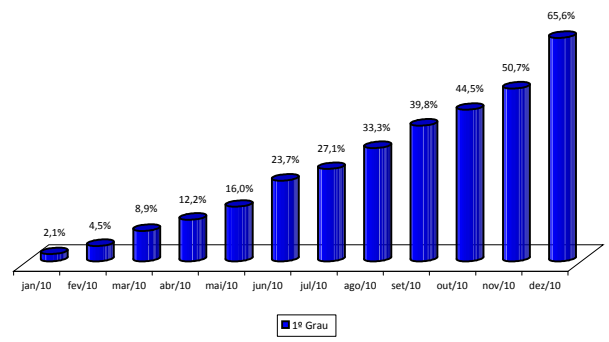
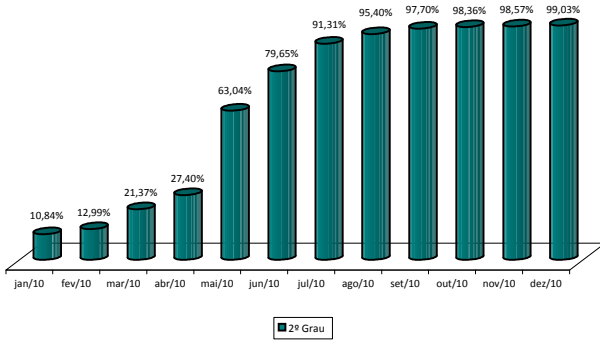


META PRIORITÁRIA 2 / 2010
GRAU DE CUMPRIMENTO



	Acervo da meta em 31/12/2009	Processos que entraram na Meta	Processos que saíram da Meta	Processos Julgados	Grau de Cumprimento
2º Grau	1.956	0	3	1.934	99,0%
1º Grau	2.464	98	195	1.553	65,6%
Juizados Especiais	147	10	13	147	102,1%
Turmas Recursais	11	0	0	6	54,5%
JF 5ª Região	4.578	108	211	3.640	81,3%

Grau de Cumprimento Meta 2 em 2010 = **81,3%**